

Electrical installations must be checked by licensed electricians on behalf of the Owner/User at least every 14 years for residential properties and every 1 to 7 years for business properties, based on type.



The responsibility for the safety of indoor electrical installations lies with the Owner/ User and his/her Electrician, not the Network Operator.  
For more information  
[www.deddie.gr](http://www.deddie.gr)



Ensuring electrical safety for your home is necessary to avoid any electricity-related risks.



Safety of home electrical installations is ensured ONLY through proper electrical home inspection.



[www.deddie.gr](http://www.deddie.gr)

HELLENIC ELECTRICITY DISTRIBUTION  
NETWORK OPERATOR S.A.

20,Perraivou & 5, Kallirrois Str., 117 43 Athens, Greece  
[infodeddie@deddie.gr](mailto:infodeddie@deddie.gr)



# USER SAFETY GUIDE

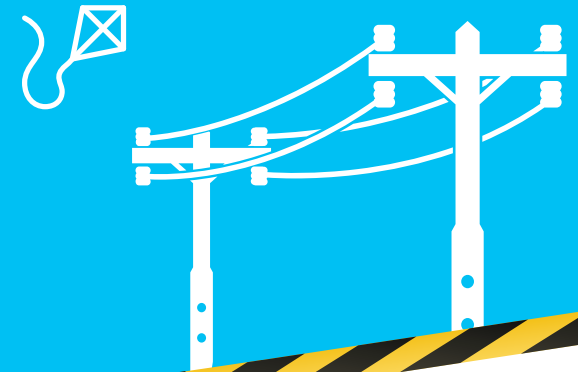


# Outdoor areas

- ⚡ If a cable falls off, users must keep a minimum distance of at least **15 meters** and contact the staff of HEDNO.
- ⚡ For lifting machinery, safety distance is **3 meters** from the power lines.
- ⚡ Kite-flying and hunting activities must be avoided near the power network.
- ⚡ Farmers must be extremely cautious when working near power networks in order to avoid damaging poles, pillars, conductors and cables. Additionally, they must refrain from burning or pruning or crown-thinning material (tree branches, sticks, grass etc.) near network facilities and wooden poles.

- ⚡ Climbing on power network poles and pillars is prohibited.
- ⚡ Climbing on trees located near the power network must be avoided.
- ⚡ Tree pruning near the power network must be avoided.
- ⚡ Entering enclosed areas of power substations is prohibited.
- ⚡ Prior to commencement of any excavation works, please refer to HEDNO for any information regarding the presence of underground power lines and of their traversing in order to prevent electrical shocks and network damages

- ⚡ It is strictly prohibited by law to have any items, such as garbage bins, antennas, posters and plates, placed or hung on power network poles or pillars.



# Indoor areas



- ⚡ Avoid contact with water in operating devices.
- ⚡ Check switches, outlets, lamps and all electrical appliances to ensure they are operating properly.
- ⚡ Do not remove plugs from the outlet by pulling off the cable. Instead, hold the plug with your other hand while pulling off the cable.
- ⚡ Do not switch on electrical appliances that are connected to the outlet to check or repair something inside.
- ⚡ Never place any metallic items in the outlets.

- ⚡ Always place outlet safety covers to protect children.
- ⚡ Turn off your water heater while using the shower.
- ⚡ Do not keep multiple appliances connected to one power strip as it may cause overload and fire.
- ⚡ Do not use light bulbs with a greater wattage than the maximum indicated in the lamp user guide. Always check wattage limit before placing a new bulb in a lamp.
- ⚡ Before use, please check the cables of the electrical appliance for any damage or wear.